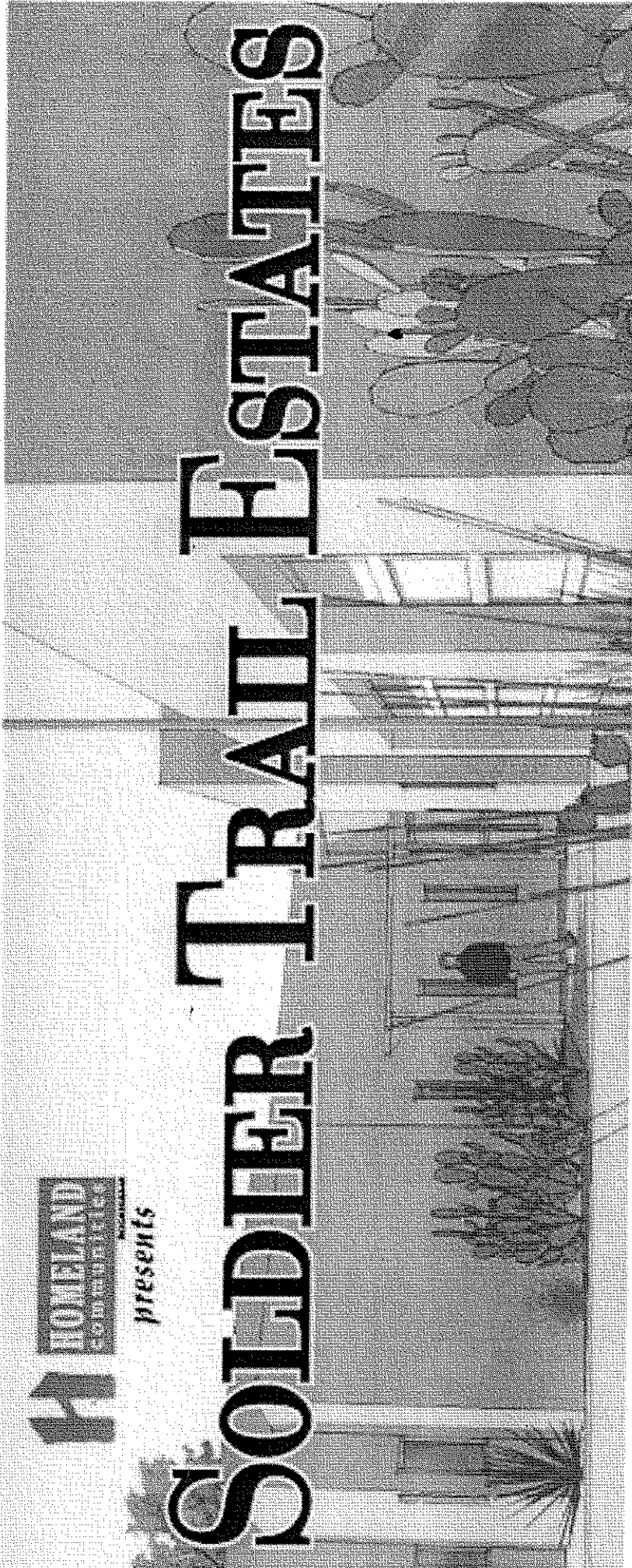
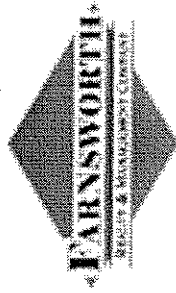


presents

# SOLDIER TRAIL ESTATES



Sales  
&  
Marketing  
by :



**MALCOLM COOMBER**

**(520) 204-7897**



## *Soldier Trail Estates*

Lot 1      3.31 acres      \$ 1,120,500  
4317 sq. ft., 4 bdrms., den, 3.5 bths.,  
3 car garage

Lot 2      .93 acres      \$799,500  
2763 sq. ft., 3 bdrms., den, 2.5 bths.,  
3 car garage

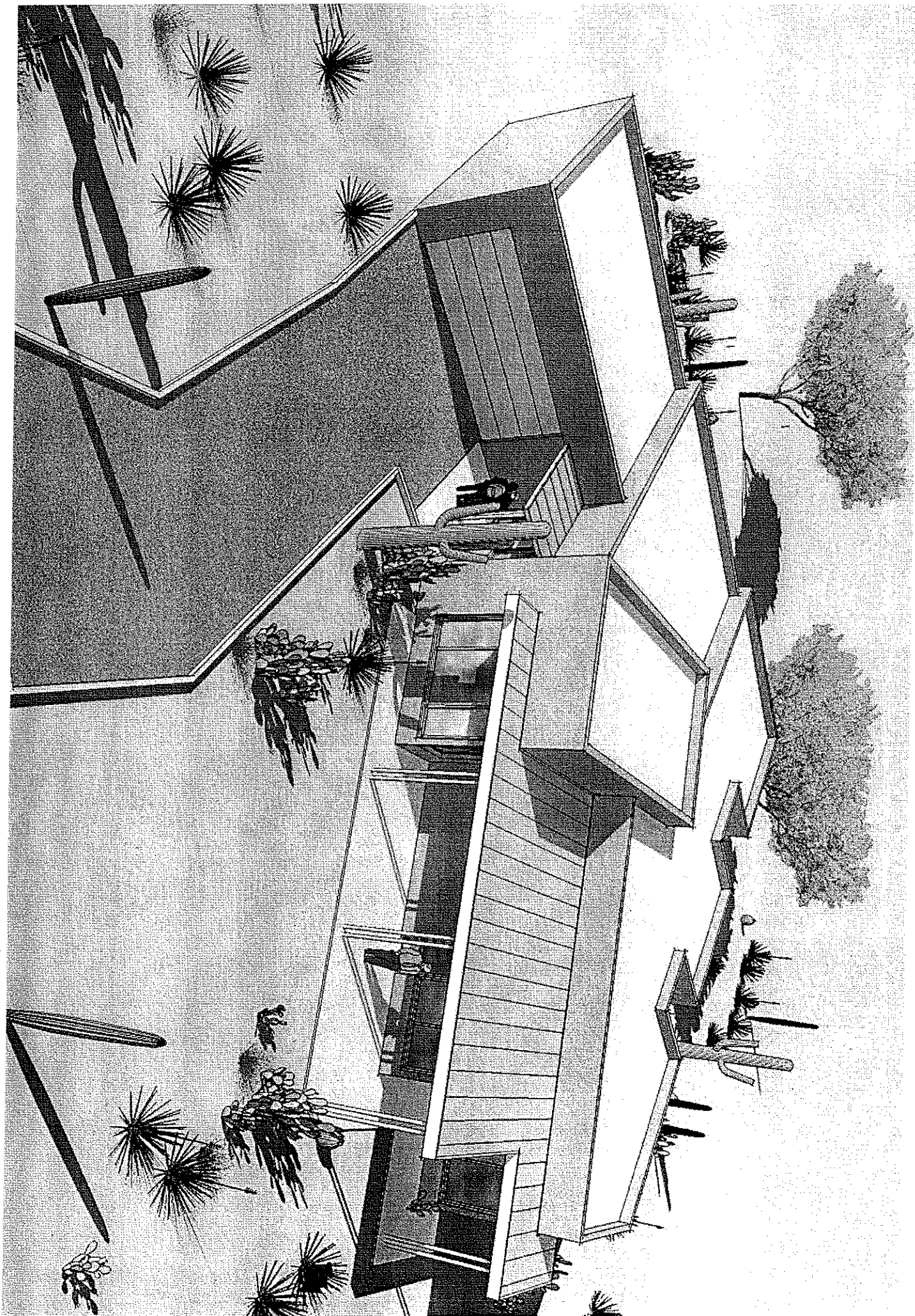
Lot 3      .99 acres      \$1,025,500  
4317 sq. ft., 4 bdrms., den, 3.5 bths.,  
3 car garage

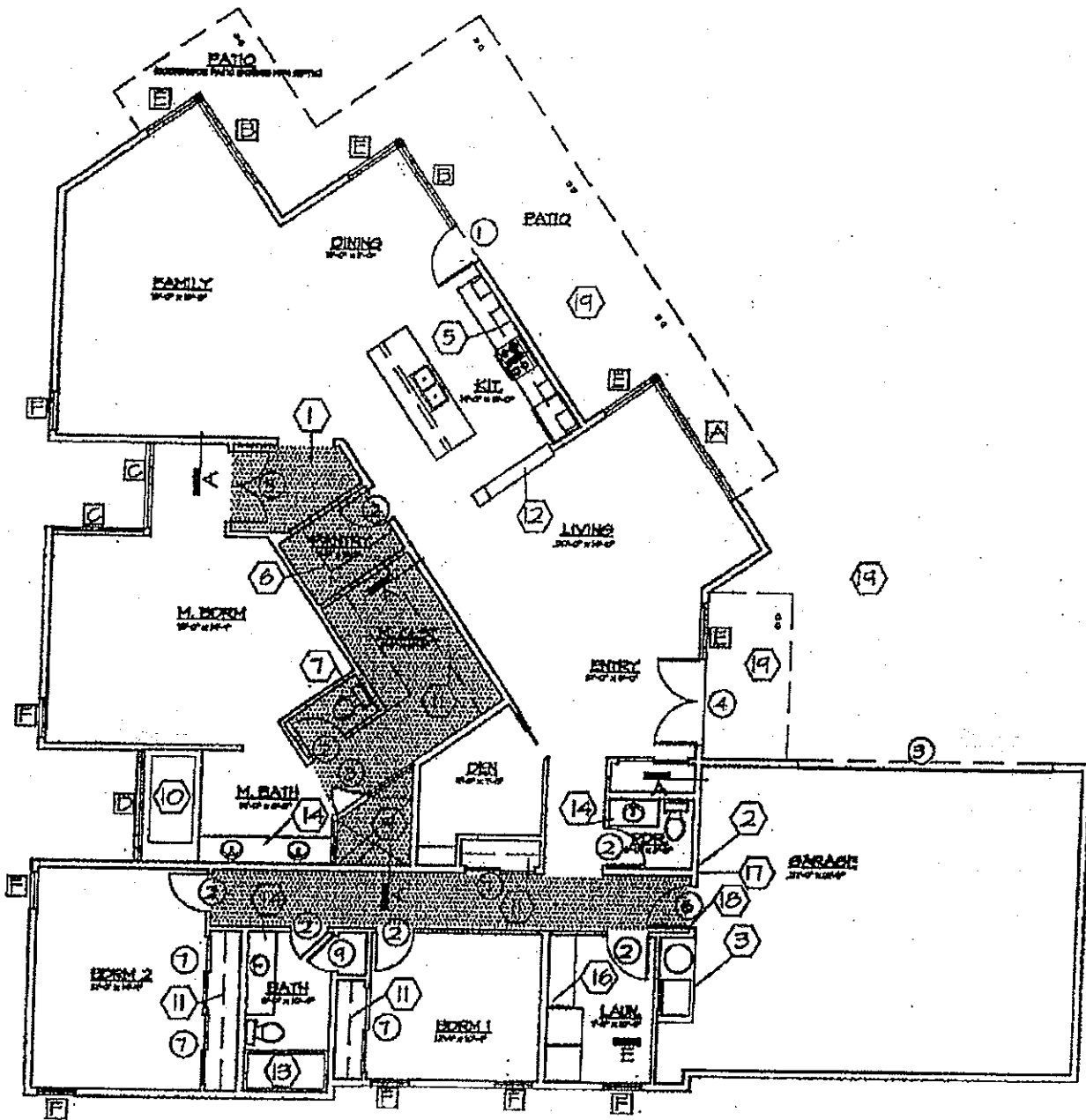
Lot 4      .97 acres      \$1,025,500  
4317 sq. ft., 4 bdrms., den, 3.5 bths.,  
3 car garage

Lot 5      .98 acres      \$859,500  
3996 sq. ft., 4 bdrms., den, 3 bths.,  
3 car garage

Lot 6      .97 acres      \$699,500  
2763 sq. ft., 3 bdrms., den, 2.5 bths.,  
3 car garage





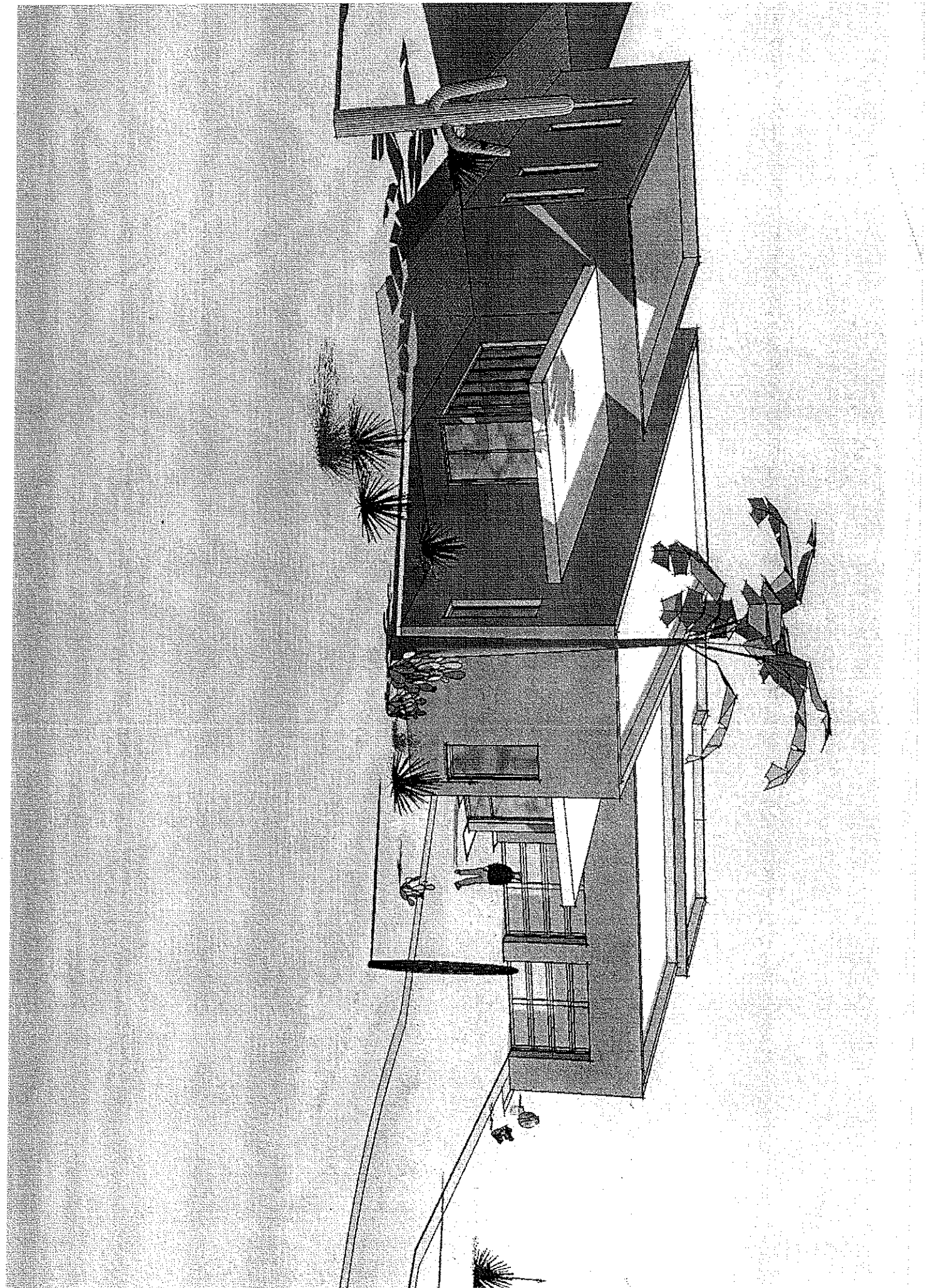


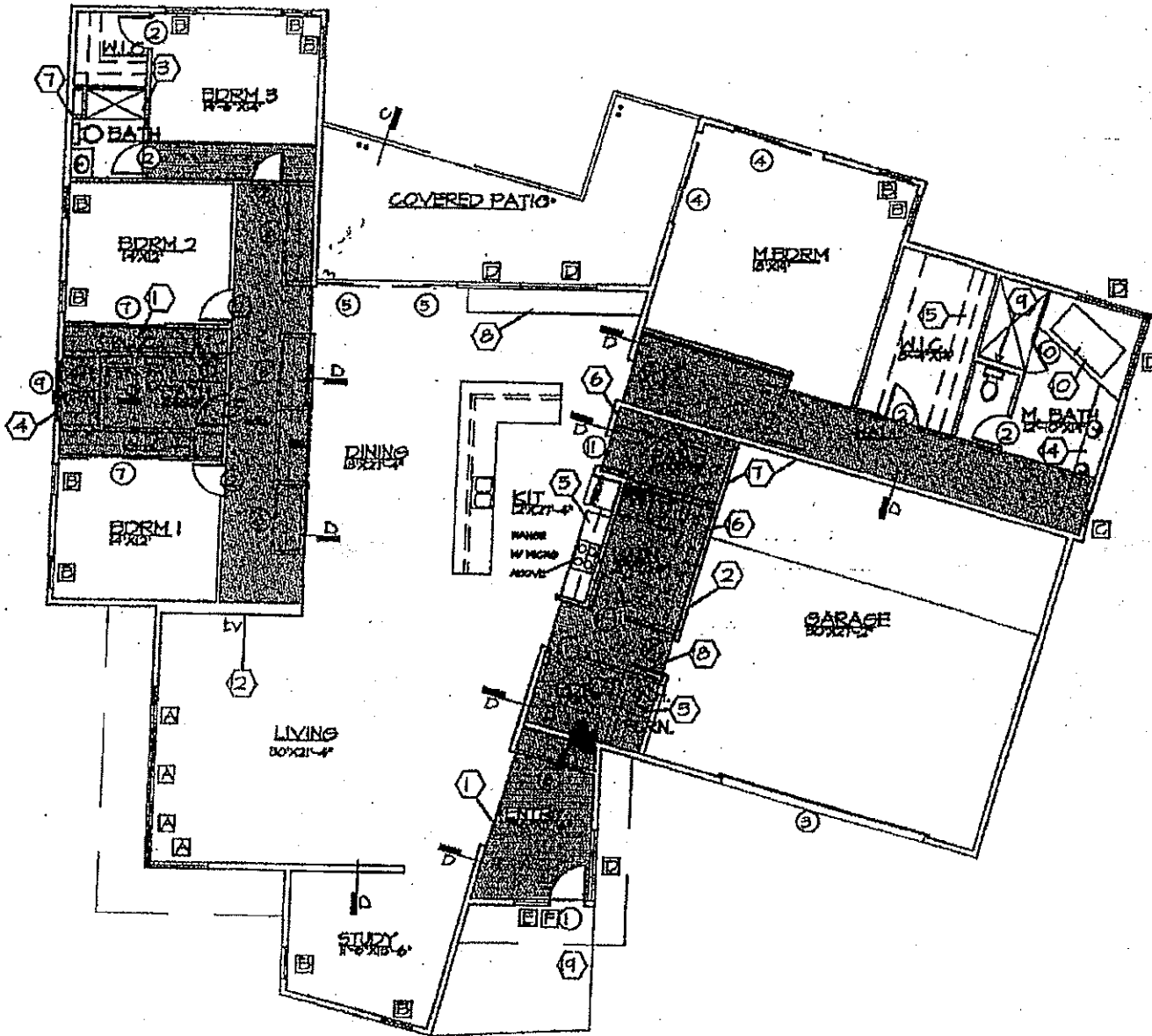
AREA TABULATION:	
LIVING	2,762 SQ. FT.
GARAGE/STOR	648 SQ. FT.
PORCH	418 SQ. FT.

# FLOOR PLAN - REFERENCE

1/8"=1'-0"





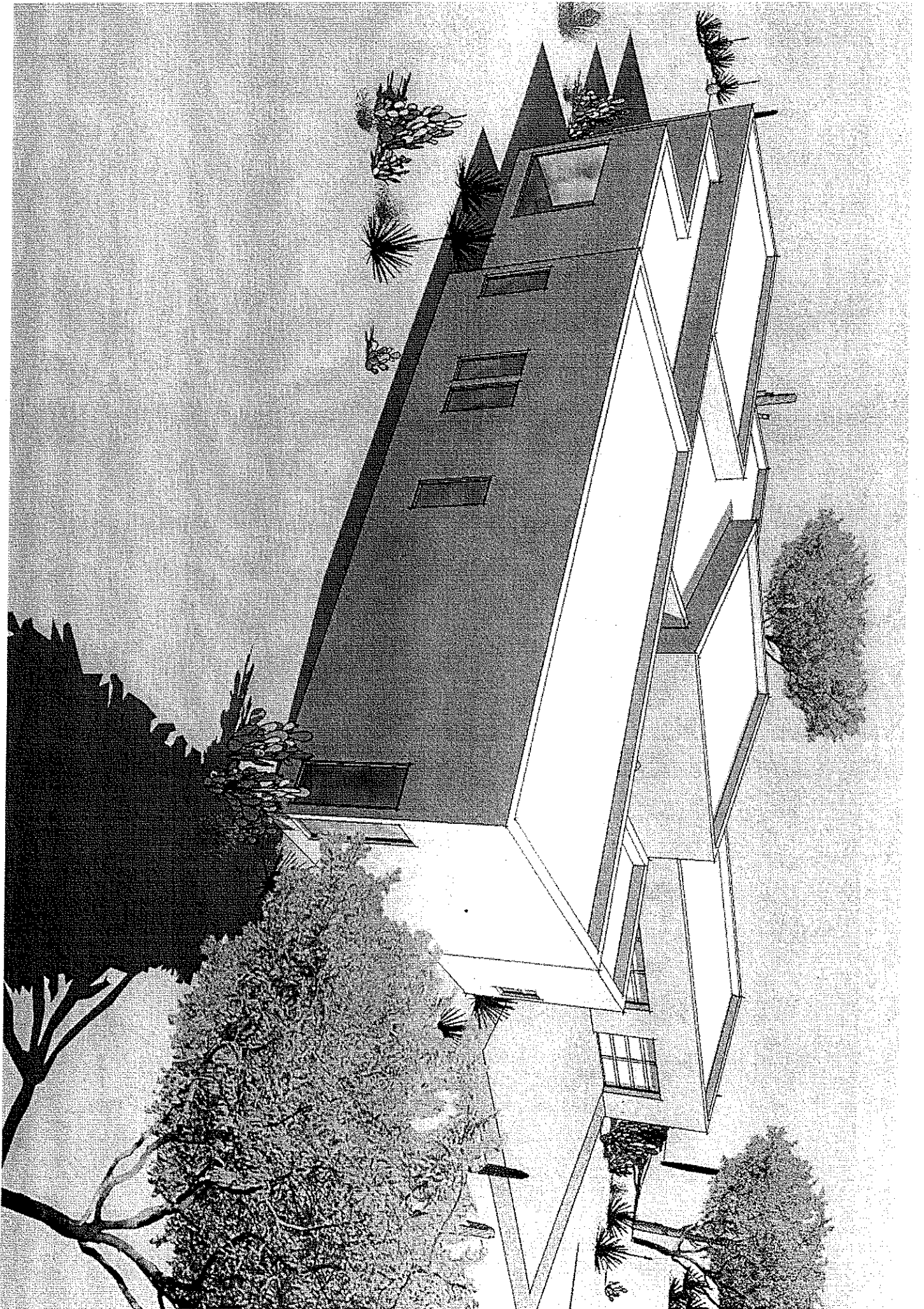


AREA TABULATION:	
LIVING	4,021 SQ. FT.
GARAGE/STOR	236 SQ. FT.
PORCH	541 SQ. FT.

**FLOOR PLAN - REFERENCE**

1/8"=1'-0"





AREA TABULATION:	
LIVING	4315 SQ. FT.
GARAGE/STOR	4075 SQ. FT.
PORCH	650 SQ. FT.

**A** FLOOR PLAN -  
1/8" = 1'-0"

